

DID YOU KNOW?

A dripping faucet can increase your water usage and your bill.

A slow drip can waste as much as 20 gallons of water each day. A mere 1/16-inch leak wastes 100 gallons of water each day. With that much water — and money — going down the drain, it's important to get leaky faucets fixed.

PLACE
STAMP
HERE

DO YOU KNOW HOW TO TURN OFF YOUR WATER IN CASE OF AN EMERGENCY?

Your main shut-off valve controls all of the water coming into your house. Everyone in your home should know the location of this valve, and how to turn it off. Water shut off valves are usually near your water meter. In case of an emergency such as a burst pipe, fast action could prevent costly damage from flooding. Water valves are generally closed by turning the handle clockwise. If a valve does not turn easily, do not force it or it might break. You may want to have the valve repaired, so that it will work when you need it.

If you are leaving town for vacation or even just the weekend, turn the main water valve off. This is the best protection against water damage and an increased water bill.

Caterpillar Trail Public Water District

404 Ten Mile Creek Rd
East Peoria, IL 61611-9240



**404 Ten Mile Creek Rd
East Peoria, IL 61611
Phone: (309)383-4002
Email: Cattrailwater@mtco.com
Website: www.cattrailwater.org**

Leak Detection Brochure



Even a very small leak in your home can add up quickly and increase your monthly water bill. A hole the size of a pin head could waste more than 4,000 gallons of water each month.

It's important to find and repair any leaks as soon as possible to avoid larger than normal water bills and possible water damage to your home or business.

CHECKING FOR WATER LEAKS

1. **Toilets** - check your toilets first if you suspect you have a leak.
2. **Indoor and outdoor faucets** – check for drips.
3. **Shower heads** – check for drips.
4. **Dishwashers and clothes washer** – Check for drips or stains underneath or behind these appliances.
5. **Sprinkler Systems**—Check for soft spots on your lawn.
6. **Water heater tank** – Check for water leaks on the floor and water dripping down the side of the tank.
7. **Water softener** – Make sure it is regenerating properly. Check the discharge line for any flow. There should be no flow unless the softener is regenerating.
8. **Power Humidifier** – Make sure it is working properly.
9. **Boiler**—Listen for the sounds of running water. If it is continuous and does not stop occasionally, you may have a leak in your boiler system.
10. **Fire Suppression Systems**—Make sure sprinkler heads are tight and not leaking.
11. **Refrigerator Ice Maker**—Check for small puddles of water under the refrigerator. Excessive ice accumulation may indicate a leak also.
12. **Swimming Pools**—If water level stays higher than normal or pool overflows when people are using it, your automatic shut-off valve could be malfunctioning.
13. **Service Line Leaks**—Check for soft, wet spots in your yard or the sounds of running water outside your house. This could indicate a leak in your service line.

If you have a water powered sump pump, we recommend that you disconnect it. Using a water powered sump pump can greatly increase your water usage and your monthly bill.

DETECTING LEAKS IN YOUR HOME OR BUSINESS

If you think you have a possible leak, we suggest checking your toilets first. Toilet leaks account for more than 95% of all water waste. Toilet leaks are caused by damaged or worn parts in the toilet flush tank. Some common causes of toilet leaks include Float arm problems, a defective flapper valve (plunger ball) or a tiny pinhole opening below the overflow pipe's water line.

If you have a water softener, we suggest you also check this for leaks.

Checking for possible toilet leaks.

Check the toilet for leaks by removing the top of the tank and listening for water running. If you hear water running, try to determine where it is coming from. **You will not always hear water running when your toilet is leaking.**

To check for a possible toilet leak, put a few drops of food coloring in the toilet tank. Do not flush. Wait several minutes and check to see if the coloring has seeped through to the bowl. This would indicate a leak. Shine a flashlight into the overflow tube. This should be dry.

Water level in the toilet tank should be a minimum of 1" below the overflow tube.

Water Softener Leaks

Check the discharge line for water flow. This will typically empty into a floor drain. The only time there should be water flow in the discharge line is during regeneration. If you suspect your water softener has a leak, put the water softener into bypass mode and call a water softener professional for possible repairs.

Power Humidifiers

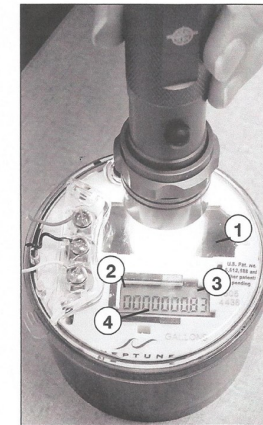
The overflow line, typically going to a floor drain should not have water running. If you suspect you have a malfunction, contact an HVAC professional.

READING YOUR WATER METER

Shine a flashlight on the light sensor (small hole near the center of the faceplate or solar panel) to see the meter reading. The meter will flash between the reading and the Rate of flow every 6 seconds.

To check for leaks, turn off all faucets and appliances that use water and shine your flashlight on the light sensor to see if there is any water usage. If you still have flow this indicates a leak.

Explaining Your New Neptune Water Meter



- 1 **SOLAR CELL** - Located at the top of the meter, supplies power for the LCD panel.
- 2 **LEAK DETECTOR** - Displays a possible leak with a dripping faucet icon in upper left corner of the LCD panel.
OFF - No leak detected.
FLASHING - Intermittent leak indicates that water has been used for at least 50 of the 96 (15 minute interval) readings in a 24 hr. period.
ON CONTINUOUSLY - Indicates water use for all 96 (15 minute interval) readings during a 24 hr. period.
- 3 **FLOW INDICATOR** - Shows the direction of flow through the meter with an arrow icon in the upper right corner of the LCD panel.
ON - Water in use.
OFF - Water not in use.
FLASHING - Water is running slowly.
- 4 **READING SCREENS** - The meter shown in the photo is displaying the water meter reading of 000000.83 gallons. Rate of Flow screen then appears with the word RATE above the numbers and is displayed every 6 seconds.

HOW TO READ YOUR NEPTUNE WATER METER IF NEEDED

Hold a bright flashlight on the solar cell. (As shown in the photo above).

The LCD display will flash 3 reading screens:

- 1) MTU serial number (not important to the resident).
- 2) Meter Reading (meter reads in hundredths, 2 decimal places).
- 3) Rate of Flow (if a reading shows up, there is water moving through the meter). This will appear every 6 seconds on the LCD display.

Rate of Flow

To check for a leak, shut off all water in the house and look at the rate of flow. If there is a reading for the rate of flow (with your water shut off), there is a leak in your water system after the water meter. Contact a licensed plumber to remedy the problem as soon as possible to avoid excessive billing.